



PRODUCT GUIDE

ROKK™

WIRELESS.

Nano 10W.

SC-CW-11F

12/24V waterproof wireless charging phone micro mount,
engineered for the marine environment.

- IPX6 waterproof
- Spring loaded grip
- Tiny footprint
- Securely holds & wirelessly charges your phone
- Qi certified, works with all wireless charging phones
- Charges through non-metallic phone cases
up to 3mm (0.11")



coming
soon

ROKK™

WIRELESS.

Cove LED 10W.

SC-CW-10F (with LED)

SC-CW-09F (without LED)

12/24V waterproof wireless charging pocket.
Cove safely houses & wirelessly charges your phone at the same time.

Cove is perfect for storing your phone in a landscape orientation, saving space on the required installation depth. Our LED version features an RGB backlight to softly illuminate the pocket.

Now you can keep your phone in a safe place onboard, tucked away, charged, and ready to go!



NEW
2022



ROKK™

WIRELESS.

Nest 10W.

SC-CW-06F

12/24V waterproof wireless charging pocket. Nest safely houses & wirelessly charges your phone at the same time. Now you can keep your phone in a safe place onboard, tucked away, charged and ready to go!

- 12/24V input compatible.
- IPX6 Waterproof.
- Designed to fit in with any boat design ascetics
- Qi-certified wireless charging.
- Compatible with a wide range of device sizes from Apple, Samsung and many more.
- Charges through non-metallic waterproof cases up to 3mm thick (0.11").



30TH
DAME
NOMINATED
2021



Now 60%
Faster



ROKK™

WIRELESS.

Catch 10W.

SC-CW-08F

12/24V waterproof wireless phone charging mat. Catch safely holds & wirelessly charges your phone at the same time.

Simply place your phone onto the center of the charging mat and instantly start wirelessly charging.

- IPX6 Waterproof.
- Qi-certified wireless charging.
- Compatible with a wide range of device sizes from Apple, Samsung and many more.
- Charges through non-metallic waterproof cases up to 3mm thick (0.11").



Now 60%
Faster



ROKK™

WIRELESS.

Edge 10W.

SC-CW-05F

Multi adjustable, 12/24V waterproof wireless phone charging mount. Edge is perfect for crowded consoles, side-mounting, flat and vertical surfaces.

- IPX6 waterproof
- Securely holds & wirelessly charges your phone
- Works with all wireless charging phones
- Rotate your phone through 90 degrees
- Fine-tune for the optimum viewing angle
- Charges through non-metallic phone cases up to 3mm (0.11")



Now 60%
Faster



ROKK™

WIRELESS.

Active 10W.

SC-CW-04F

High-performance 12/24V waterproof wireless charging phone mount, engineered for an active marine environment.

- IPX6 waterproof
- Securely holds & wirelessly charges your phone
- One-handed dock/charge operation
- Works with all wireless charging phones
- Charges through non-metallic phone cases up to 3mm (0.11")



Now 60%
Faster

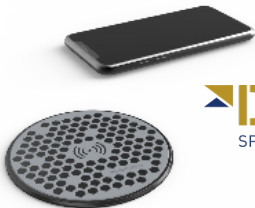


ROKK™

WIRELESS.

The IPX6 waterproof 12/24V Qi certified wireless charger range enables phone charging on board. Choose the right mounting preference for your installation from one of our 3 easy install options.

- 12/24V wireless waterproof Qi certified charger
- Qi certified
- IPX6 waterproof
- Easy install
- U.V stable
- Non slip surface
- No sealant required



DAME
SPECIAL MENTION
2018

IPX6 **CE** **Qi** **FC** **RoHS** **ECE R10.05**

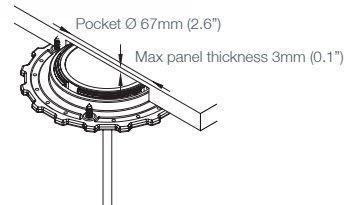
Now 60%
Faster

Hidden.

SC-CW-01F



Engineered to be installed under the surface and leave the top surface un-cluttered and looking perfect.

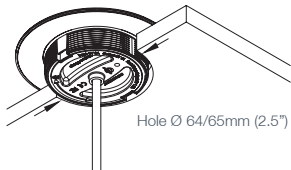


Surface.

SC-CW-02F



Low-profile, flush-mounted charge pad with an ultra grippy, non-slip surface.



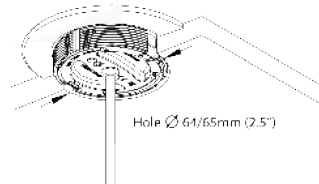
Hole Ø 64/65mm (2.5")

Sub.

SC-CW-07F



With factory fit in mind, Sub is designed to seamlessly integrate into your interior or exterior design.



Hole Ø 64/65mm (2.5")

SCANSTRUT® Flip Pro.

12/24V USB A & USB C Charge Socket.

Charging for the next generation boater.

SC-USB-F1

SC-USB-F2 (with front fit bezel)

- Ultra compact, fast charge.
- 2x faster for charging large tablets.
- Charge iPad Pro & iPhone at the same time.
- Charge USB-C compatible laptops.
- IPX4 waterproof when lid is closed.
- Cap springs closed protecting ports when
- Cap locks open when you're charging.

Input voltage: 10-30V DC (12/24V System)

Input current Max: 6A (10A fuse recommended)

Standby power draw: 0.01W

USB – C output: 60W max on 24V system

36W max on 12V system

USB – A output: 36W max

Standard 29mm (1 1/8") mounting hole



SC-USB-F2
(with front fit bezel)

NEW
2022



ROKK™ Charge +

12/24V Waterproof USB Charge Socket

SC-USB-02

The ultimate rapid charge waterproof USB charger with dual socket connectivity that can charge devices up to 3x faster than standard USB sockets.

- Universal fit for any USB Type-A connector.
- Click & Lock Lid.
- Output current 4.2A (total).
- IPX6 waterproof while in use.



ROKK™ Charge Pro.

12/24V Waterproof USB A & C Charge Socket.

SC-USB-03

- IPX6 waterproof while in use
- 2x faster for charging large tablets.
- Charge USB-C compatible laptops.
- Click & Lock Lid.
- Charge iPad Pro & iPhone at the same time.

Input voltage: 10-30V DC (12/24V System)
Input current Max: 6A (10A fuse recommended)
Standby power draw: 0.01W

USB – C output: 60W max on 24V system
36W max on 12V system
USB – A output: 36W max

NEW
2023



ROKK™ MINI.

The hi-performance ROKK mini modular system allows you to mount your electronics to boats, cars, off-road vehicles, aircraft and more. Move your device conveniently between different types of base mounts in different locations in one easy click.

1. Top



Available as starter kits or individual parts.



Tablet.



Phone.



Fish Finder.



2. Body



3. Base





Universal Tablet Clamp
RL-508



Universal Phone Clamp
RL-509



GoPro & Garmin
RL-510



1/4" Camera Thread
RL-511



Raymarine Dragonfly
RL-512



**Lowrance HOOK2
Quick Release Adapter**
RL-521



Screen Track Plate
RL-514

For devices up to 1.2 KG



Surface Mount
RLS-401



Rail Mount
RLS-402



Cable-Tie
RLS-403



Self-Adhesive
RLS-404



Suction Cup
RLS-405



AMPS base adapter
RLS-406

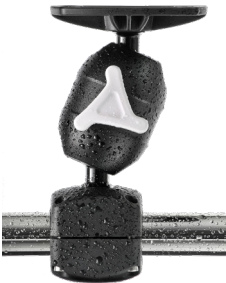


Kayak T-track
RLS-407

Tops

Bases

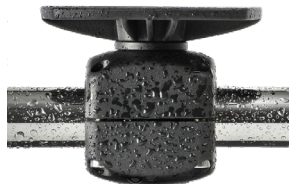
For devices up to 3KG



Adjustable Rail Mount
RL-ARM



Adjustable Deck Mount
RL-ADM



Rail Mount
RL-RM



**Adjustable Mount
for Railblaza**
RL-ARB

A multi-position mount for small electronic devices on board.
Compatible with Garmin, Raymarine, Humminbird, Lowrance, B&G and AMPS screens up to 7".

ROKK™

TOP PLATES.

Check our online Buyer's Guide for latest compatability.

Compatible with MINI and MIDI, designed to work with a large range of screens, fishfinders & chartplotters.



RL-507



RL-506



RL-504



RL-513



RL-519



RL-517



RL-520



RL-503



RL-501



RL-502



RL-515



RL-505



RL-516



RL-518

IP68 Waterproof Cable Seals



Vertical Cable Seal

Available in gray, black or 316 stainless steel
For connectors ranging from 16mm - 40mm (.62 - 1.57")
For cables from 2mm - 15mm (.07 - .59")
Split seal eliminates need to remove cable connectors during installation.



Horizontal Double Cable Seal

Cable seal for two cables.
Perfect for solar panels
- 5mm (0.19") and/or 6mm (0.23")
- 6mm (0.23") to 10mm (0.39")





Horizontal Cable Seal

Available in grey or black
Horizontal entry plastic cable seal,
for cables from 2-10mm.



Multi Cable Seal

Fits multiple cables up to 15mm diameter
Supplied with undrilled bung
Marine grade machined aluminium



Scanpod

Solution for standard instruments up to 15" screens.

Compatible with all major brands.

Check the online Buyer's Guide for latest compatibility



Deck Pod

The perfect choice for all cockpit configurations.



Helm Pod

Fits any rail spacing for perfect screen position.



Rail Pod

Fits your display onto any curved rail.



Arm Pod

Fits your display onto any rail.

Radar Mount

A cost-effective and space-saving solution for installing your radome or satcom antenna.

Fixed



Mast Mounted

Self-levelling



Backstay Mounted



Mast Mounted



Pole Mounted
(satcom optional)

Pole Mount

A versatile pole mount for deck or transom mounting. Two heights available. Adjustable base allows for installation on any surface from horizontal to vertical.



Stainless steel deck strut and rail stand-off provide outstanding support.

PowerTower

Central Aluminium Accessory Bars

For APT-150/250 only.



Aluminium PowerTower

For radar and satcom. Ideal for central cable routing as Cable Seal is included.



Composite PowerTower

Lightweight, suits any boat.

Stainless Accessory Bars

For all PowerTowers.



Stainless PowerTower

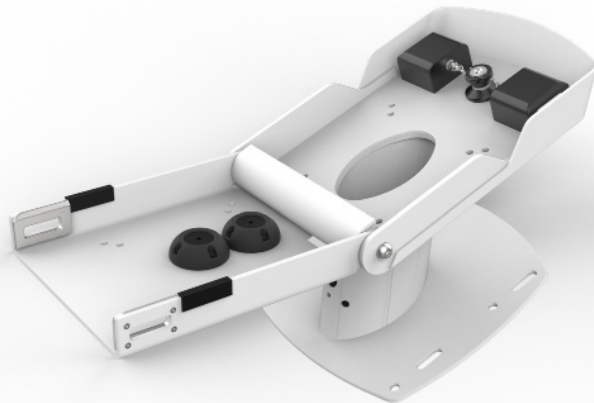
Ideal for narrow RIB arches.

Unpowered Hinge

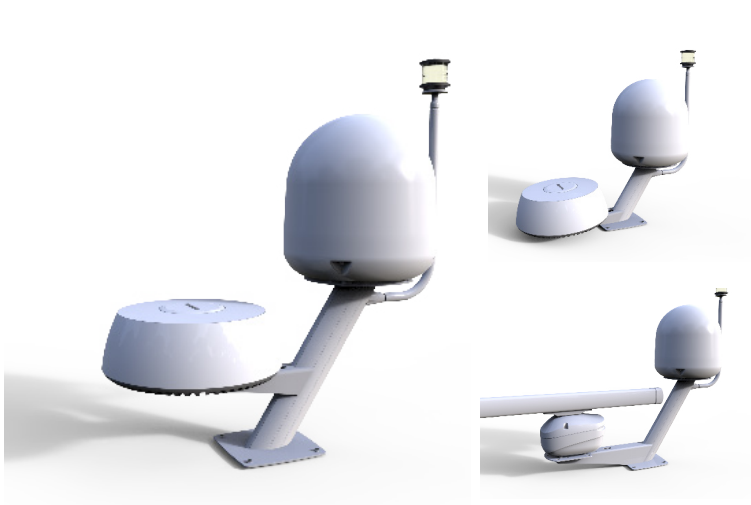
Works with all the Aluminium PowerTower Range.

NEW
2023

The hinge system is designed to safely pivot your Radar through 180°, significantly lowering the height of the installation.

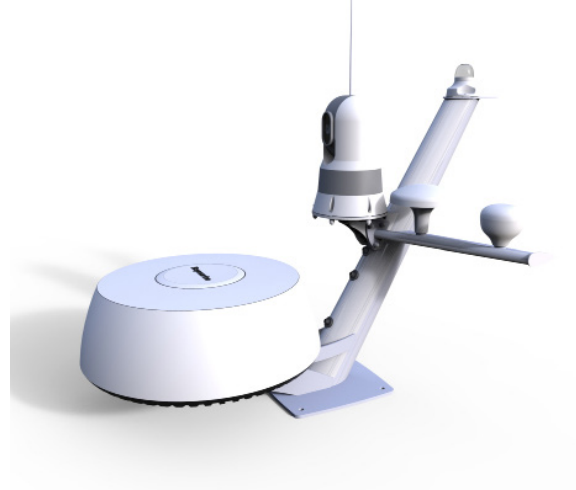


Modular Dual PowerTower



Modular mounting system for combining open array, radome, satcom, cameras and lights in one single space saving installation.

Tapered Mast



Single combination mount for radar, lights, GPS/ VHF antennas, cameras or search lights.

For sales enquiries contact:

Scanstrut HQ:
sales@scanstrut.com
+44 (0)1392 531280

Scanstrut USA:
usasales@scanstrut.com
+1 860 308 1416

www.scanstrut.com

SCANSTRUT
outdoor . technologies