

# LightHouse II

Completely Redesigned • Simplified Interface • Over 20 New Features • New LightHouse Charts



INNOVATION • QUALITY • TRUST

**Raymarine®**

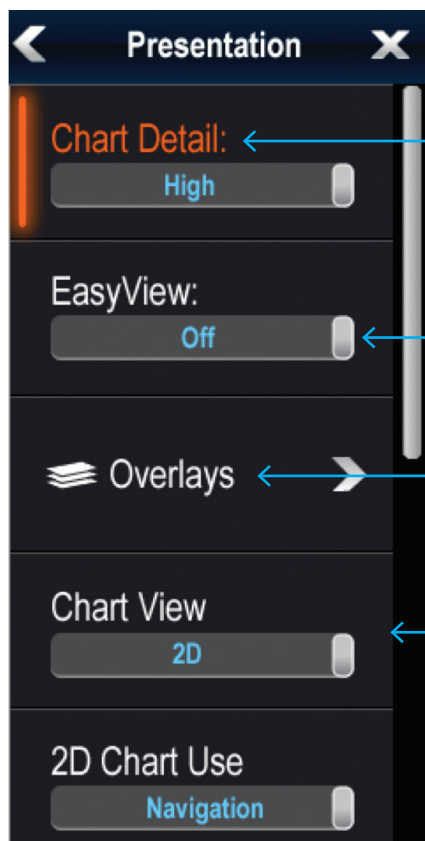




## Introducing the completely redesigned LightHouse II

### Clear and Simple Design

Redesigned for clarity and simplicity, the new LightHouse II delivers a fluid touch-screen experience that makes accessing navigation information as simple as using a smart phone. LightHouse II menu controls are also completely redesigned to allow you to quickly become an expert and take control.



Enhanced visual indicators

Easy to use slider controls

Improved organization of features and controls

High contrast color scheme for improved readability day or night

Search Results			
Waypoint	Brg & Rng	Lat/Long	Time
Search by area results			
Lighthowe Bay	051° 34.5 nm	49°44'.000N 001°19'.230W	12:30 04.06.2013
Perth Point	065° 26.5 nm	49°41'.200N 001°21'.750W	21:07 04.06.2013
Fuel stop	075° 15.5 nm	49°42'.050N 001°22'.450W	05:12 05.06.2013
Outer marker	092° 8.3 nm	49°39'.000N 001°24'.550W	09:01 05.06.2013
Marina 001	132° 1.2 nm	49°39'.000N 001°24'.550W	09:21 05.06.2013



### Simple Waypoint and Route Management

LightHouse II has all-new waypoint sorting and searching options; making it easy to find, retrieve, and navigate to all your saved hotspots and destinations.





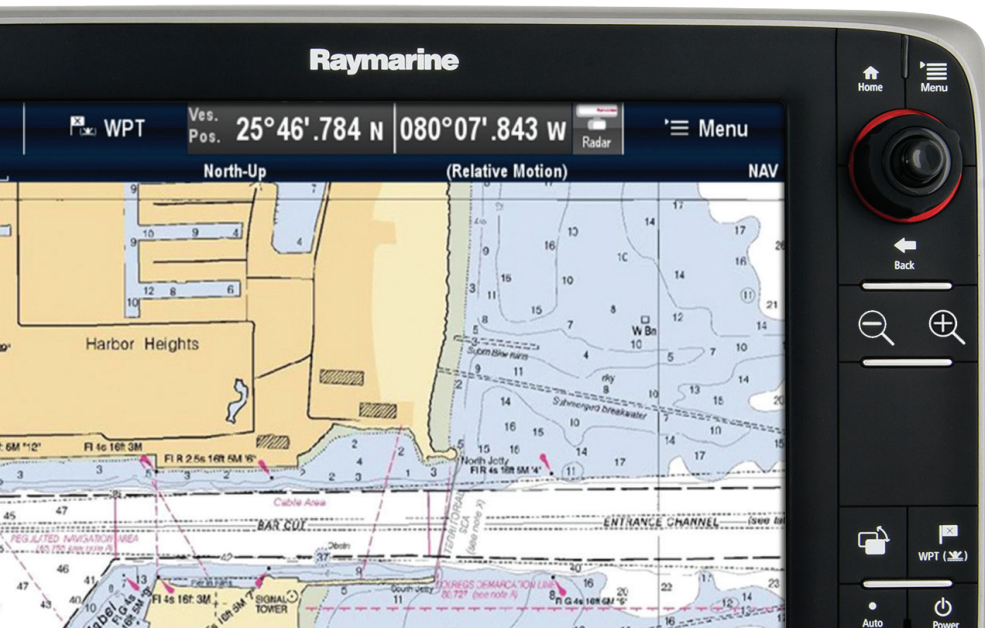


Navigate with **Freely Available** NOAA Vector and Raster Charts of the USA



LightHouse USA Vector Charts

LightHouse USA Raster Charts



### New LightHouse Charts for US waters: Raster and Vector Charting

The redesigned LightHouse II enables support for Raymarine's new LightHouse Vector and Raster Charts. Derived from freely available NOAA charts, LightHouse Charts are the simple solution for navigating U.S. coastal waters.

The LightHouse II chart engine is engineered for the future, allowing Raymarine to offer new LightHouse chart types and regions from around the globe. LightHouse II also supports industry-leading Navionics vector charts including Navionics new community-sourced Sonar charts.



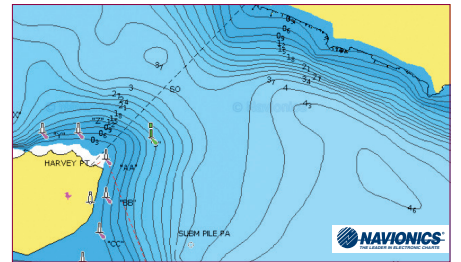
**LightHouse II adds so much more...**

- Multiple network sonar support. Easily switch between digital and CHIRP DownVision sonars
- Expanded waypoint symbol library
- Expanded waypoint and route ETA and TTG displays
- Support for Navionics SonarCharts overlays
- Customizable distance sub-units offering a whole new level of measurement precision
- New DataBar Auto-Hide feature for maximum on-screen viewing
- Now supports up to 200 waypoints per route
- LightHouse II uses the popular GPX file format for simple transfer of waypoints and routes

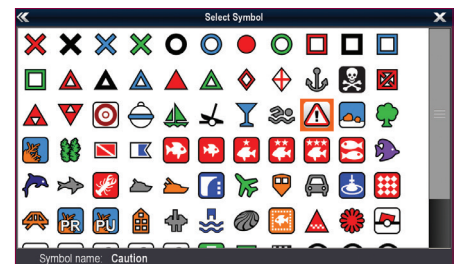


**a-Series Pinch-to-Zoom**

LightHouse II enables multi-touch pinch-to-zoom on a6 Series and a7 Series multifunction displays



Navionics Sonar Charts



Expanded waypoint symbols library



LightHouse II will be available as a **FREE** software update for Raymarine MFD owners in December 2013. Visit [www.raymarine.com](http://www.raymarine.com) to learn more.